

Easy 6000

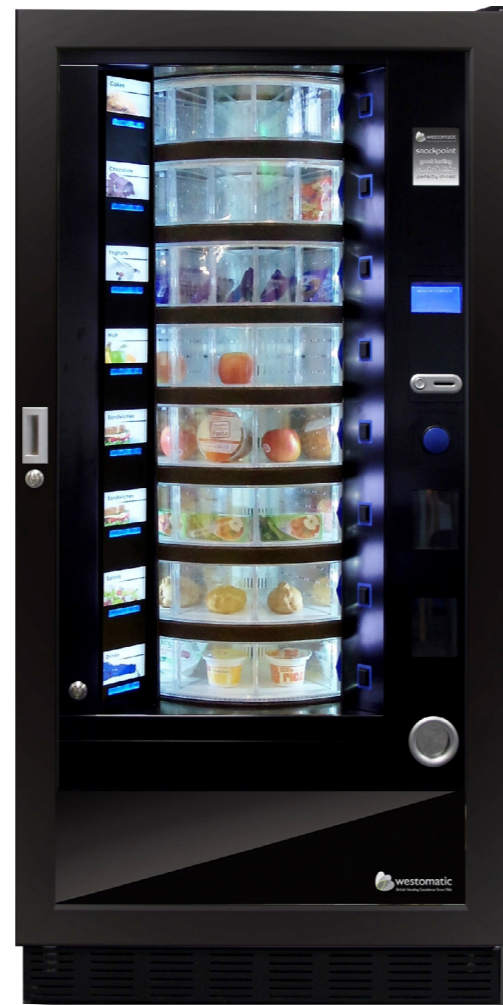
Technical Specification

DRUM CONFIGURATION

All drums can be 4, 6, 8, 12, 16, 24, or 48 compartments

Drum height (mm)	110
Number of Drums	8
Standard Capacity: 4 drums x 24 items 4 drums x 12 items	144 items
Maximum Capacity	384 items

ITEM	DESCRIPTION	AS STANDARD
Audit Capability	Wireless telemetry	Optional
Display	4 line LCD instruction display	Standard
Colour	Black	Standard
Health Control	In-built 'health control' feature	Standard
Payment System	Coin and/or cashless payment system	Optional
	Lockable Cashbox	Optional
Secure Vend	In-built secure vend feature	Standard



FRESH FOOD AT THE PUSH OF A BUTTON



ELECTRICAL SERVICES & RATINGS - POWER

Voltage (Volts AC + / - 10%)	230 - 250
Current (amps)	13
Frequency (Hz)	50

ENERGY CONSUMPTION

Idle Phase (watt hrs / hr)	440
----------------------------	-----

TEMPERATURE

Cabinet configuration temperature stratified	8 °C
--	------

DIMENSIONS

Height (mm)	1830
Width (mm)	910
Depth with door (mm)	800
Depth without door (mm)	740
Minimum sitting distance from back wall to rear of cabinet (mm)	100
Weight (kg approx)	315

E&OE Westomatic Vending Services Limited reserve the right to alter specifications and availability without notice.

EASY 6000

FRESH AND FAST

The innovative multi-drum Easy 6000 is a caterer's dream thanks to retractable pull out drums, allowing for fast and easy restock replenishment and making cleaning each drum a piece of cake.

KEY FEATURES

- 8 drums
- Up to 48 segments per drum
- 384 max product capacity
- Cooling compartment accessible from the front
- Retractable, dishwasher friendly drums
- First-in, First-out feature
- Split pricing
- Health control

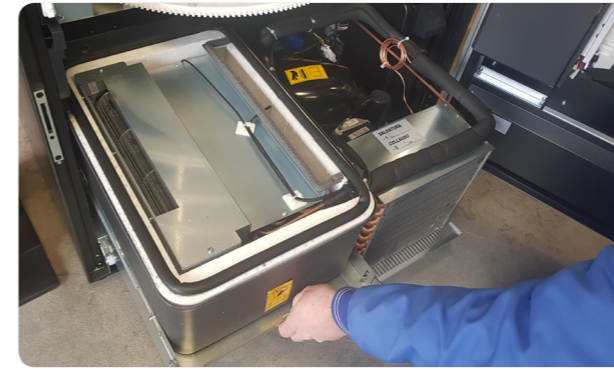
FLEXIBLE PRICING

The Easy 6000 gives you the option of having up to 3 set prices per drum, offering you more flexibility in the range of products that can be offered.

NO WASTE

Set up your machine to utilise the **First-in, First-out** feature. Items will be vended as-per expiry date.

Near-Silent Operation



FRONT ACCESSIBLE

The Easy 6000 boasts a chiller that is fully accessible from the front. The entire chiller unit can be pulled out from the front for straightforward and thorough cleaning.

FULLY ADJUSTABLE COMPARTMENTS

UP TO 48 SEGMENTS PER DRUM

Drums can be easily configured to hold a variety of products ranging from chilled meals with a 9" inch plate to snack and confectionery items.

8 drums at 120mm in height can be configured to 4, 6, 8, 12, 16, 24 or 48 compartments.



RETRACTABLE PULL OUT DRUMS

Retractable drums can easily be removed individually, are easy to clean and are even safe for use in an industrial dish washer.